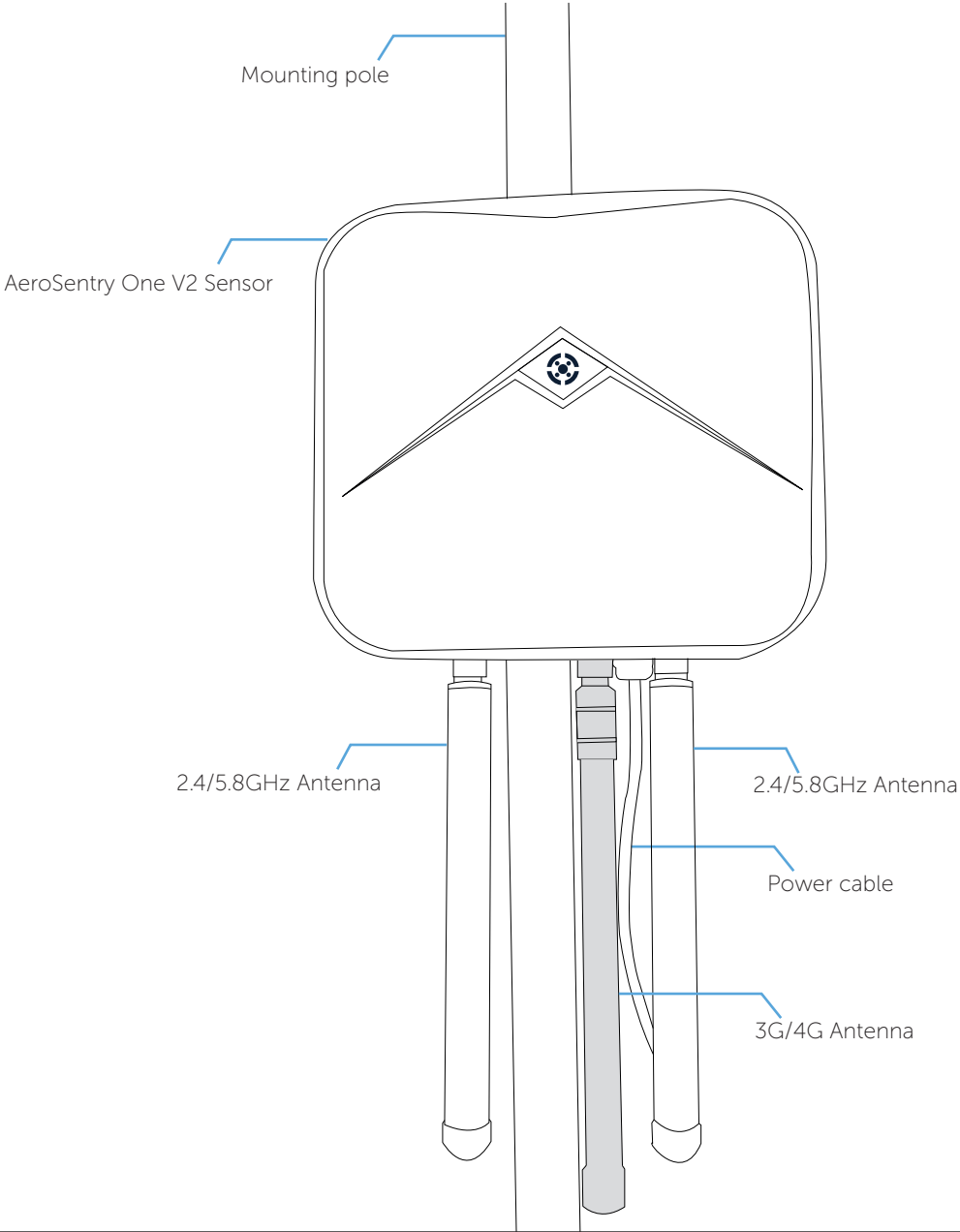


# AEROSENTRY ONE V2

INSTALLATION GUIDE

# AEROSENTRY ONE V2

## INSTALLATION GUIDE



# AERSENTRY ONE V2

## AeroSentry One V2 Sensor Installation

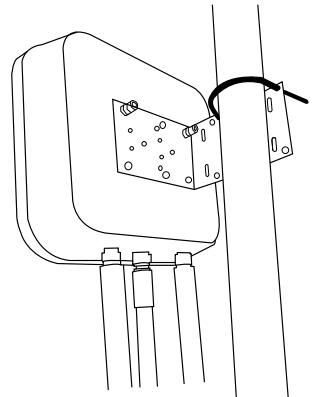
1. | Ensure that your installation location provides an optimum line of sight, with minimal building and environmental obstructions.
2. | Affix the enclosed mounting bracket to the rear of the AeroSentry Zero sensor.
3. | Once attached, attach the D-ring bracket around the pole. (See figure 1)
4. | Secure the bracket in place.

**Note:**

Minimum pole diameter = 45mm  
Maximum pole diameter = 62mm

5. | Connect antennas as required. See antenna mounting options on the following page.
6. | Connect power cable.
7. | Ensure lighting protection is in place if required.
8. | 3g/4g connection is built into the AeroSentry One sensor. To ensure connection, make sure there is sufficient mobile signal in the area.

FIGURE 1



CONTINUED OVERLEAF

# AERSENTRY ONE V2

## ANTENNA OPTIONS

1. | Connect the 2.4/5.8 GHz antennas to the N-type connectors underneath the sensor (as per figure 2).

Alternatively connect the enclosed RF coaxial cables to the N-type connectors and mount the antennas on mounting arm behind the sensor (as per figure 3).

2. | Continue with AeroSentry One V2 set up on previous page.

FIGURE 2

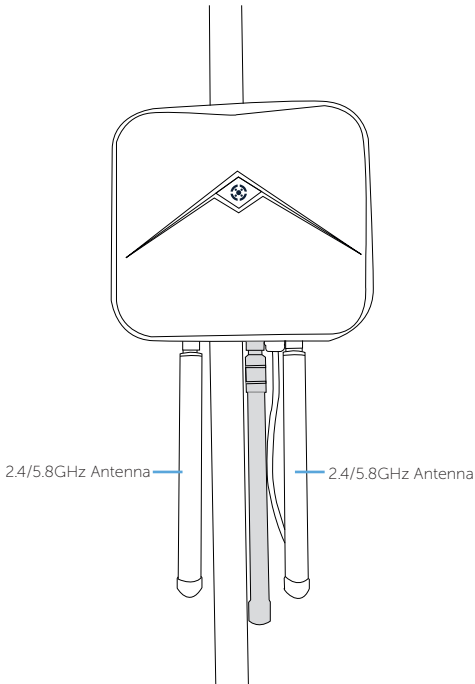
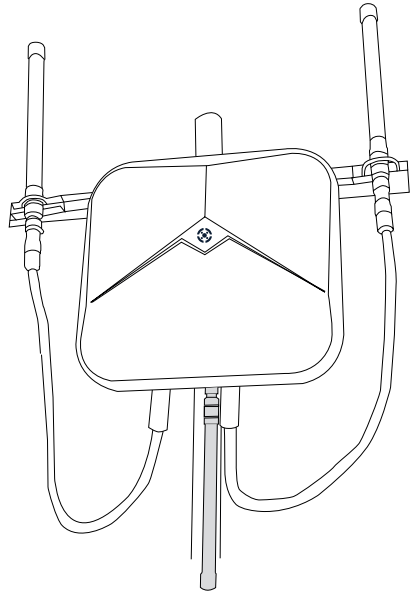


FIGURE 3



## Lightning Protection

AeroSentry One V2 does not include a lightning induction system, and should be installed within the protected region of another lightning induction system.



# DRONEDEFENCE

DRONEDEFENCE.CO.UK

Drone Innovation Centre, Retford, DN22 7TX | +44 (0) 843 289 2805 | [info@dronedefence.co.uk](mailto:info@dronedefence.co.uk)

[www.dronedefence.co.uk](http://www.dronedefence.co.uk)