

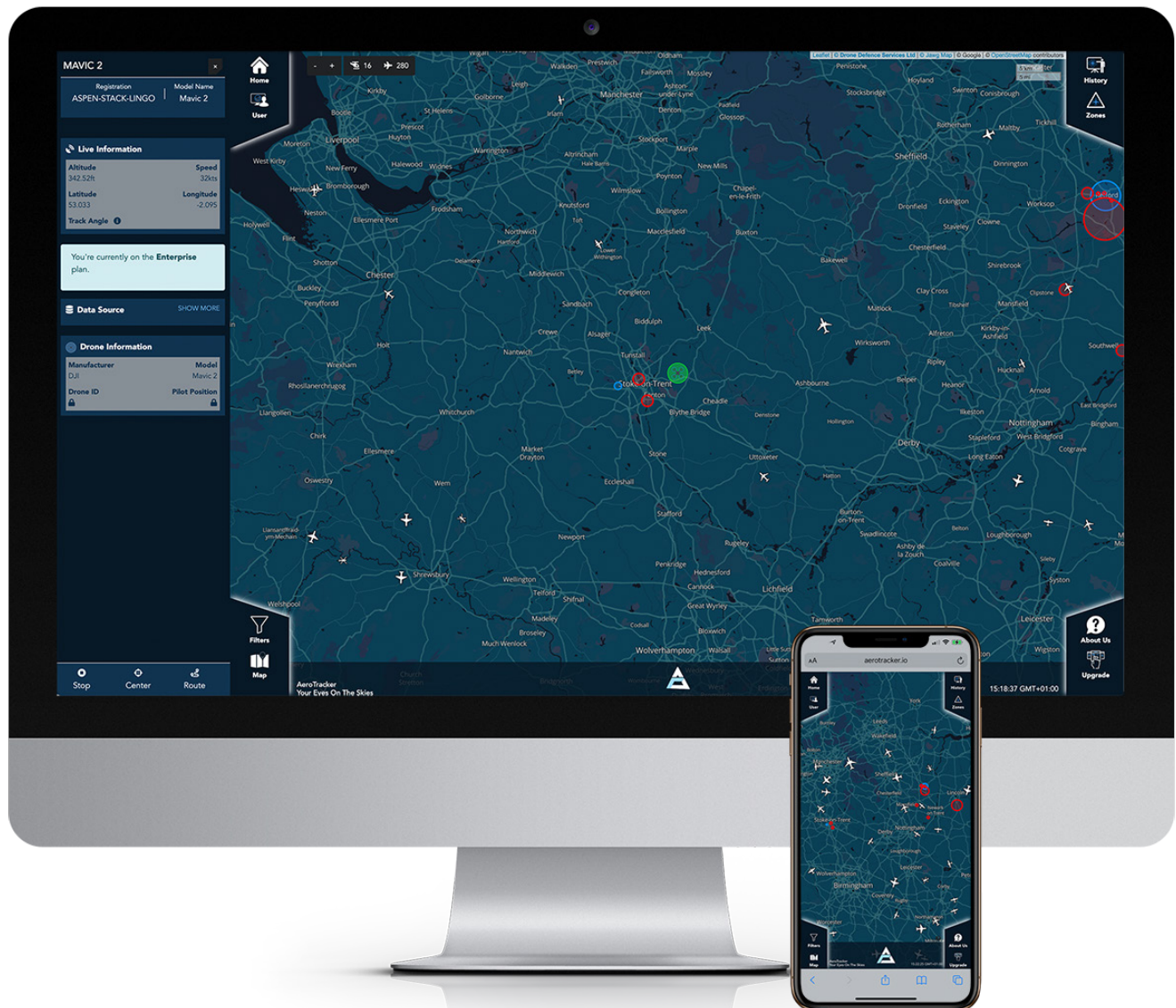


AEROTRACKER

SET UP GUIDE

AEROTRACKER

SET UP GUIDE



Contents

- 2. | AeroTracker account
- 2. | User profile settings.
- 6. | Map filters
- 7. | Map settings
- 7. | Accessing flight history
- 8. | Setting zones
- 9. | About AeroTracker

AeroTracker account

REGISTERING WITH AEROTRACKER

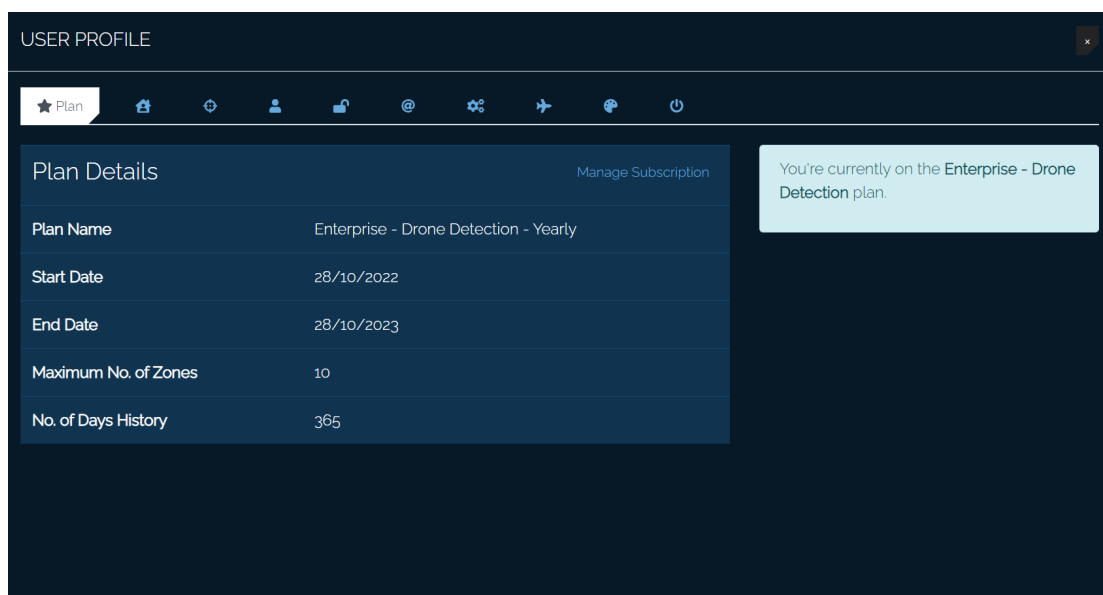
1. | Click user.
2. | Click 'Create a free account'.
3. | Enter your full name, email address and password.
4. | Agree to the terms and conditions.
5. | Click 'Register'.

SIGNING IN

1. | Click user.
2. | Enter email address and password.
3. | Click 'Sign in'.

User Profile Settings

1. | Click user.



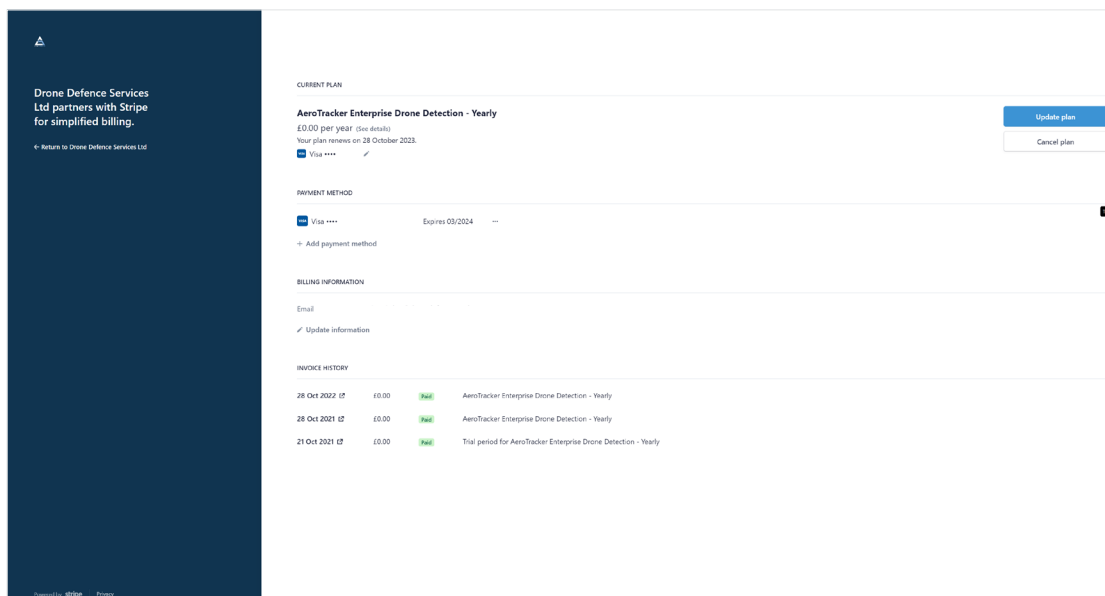
The screenshot shows the 'USER PROFILE' settings page. At the top, there is a navigation bar with a 'Plan' dropdown and several icons. Below this is a 'Plan Details' section with a 'Manage Subscription' link. The details are as follows:

Plan Details		Manage Subscription
Plan Name	Enterprise - Drone Detection - Yearly	
Start Date	28/10/2022	
End Date	28/10/2023	
Maximum No. of Zones	10	
No. of Days History	365	

To the right of the plan details, a light blue notification box states: 'You're currently on the Enterprise - Drone Detection plan.'

MANAGE YOUR AEROTRACKER

1. | Click 'Manage subscription'.
2. | You will be taken to a Stripe webpage, where you will see all the packages available.
3. | Toggle between Yearly and Monthly plans.
4. | Select the plan you require.
5. | Click continue and follow payment steps.



ASSETS

1. | Click 'Assets' tab.
2. | Add an asset to your profile.
3. | Click the 'Eye' icon to view the location on the map.

SENSORS

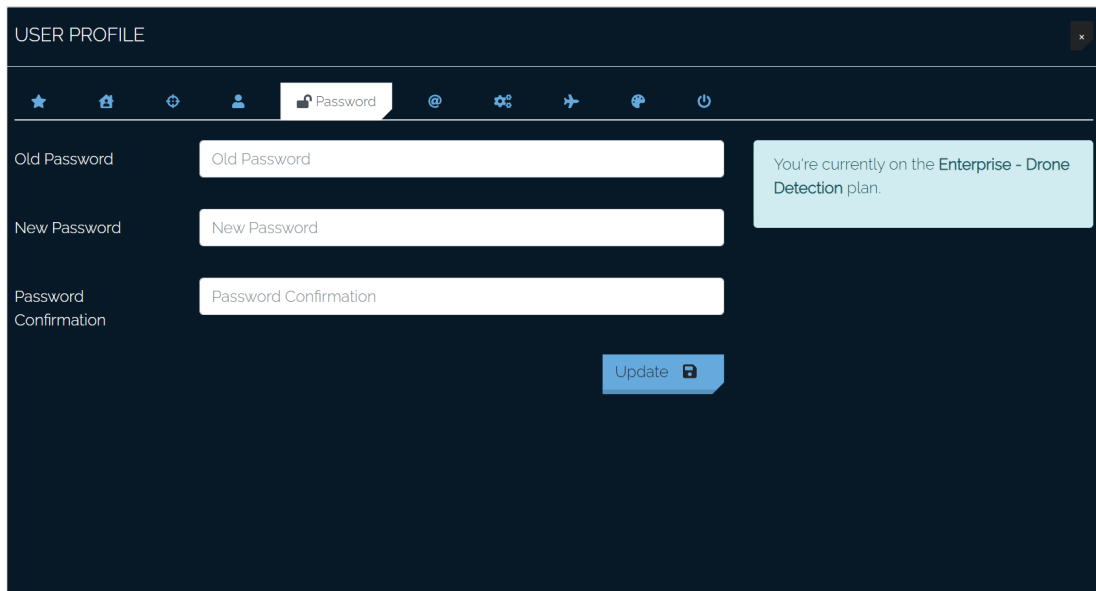
1. | Click 'Sensors' tab.
2. | View the sensor information.
3. | Click the 'eye' icon to view the sensor location on the map.
4. | Click the 'history' icon to view the flights detected by this particular sensor.

PROFILE

1. | Click the 'Profile' tab.
2. | Amend the name associated with the AeroTracker account.
3. | Click 'update'.

PASSWORD

1. | Click the 'Password' tab.
2. | Enter the existing password.
3. | Enter the new password twice.
4. | Click 'update'.



The screenshot shows a dark-themed user profile interface. At the top, the title "USER PROFILE" is visible. Below it is a navigation bar with several icons, including a star, a home icon, a plus sign, a person icon, a lock icon labeled "Password", an email icon, a gear icon, a plane icon, a globe icon, and a power icon. The "Password" tab is currently selected. The main content area contains three input fields: "Old Password", "New Password", and "Password Confirmation". Below these fields is a blue "Update" button with a lock icon. On the right side, there is a light blue notification box that reads: "You're currently on the Enterprise - Drone Detection plan."

USERNAME

1. | Click 'Username' tab.
2. | Amend the email address associated with the account.
3. | Click 'Update'.

SETTINGS

1. | Click the 'Settings' tab.
2. | Amend the map measurements for Speed, Distance and Altitude.
3. | Provide a distance range ring in meters. if required.
4. | Click 'Update'.

MY DRONES

1. | Click the 'My Drones' tab.
2. | Enter a drone's serial number to add a drone to your list.
3. | Click 'Update'.
4. | To whitelist a drone, enter a drone's three word identification
5. | Click the '+' button to add.

COLOURS

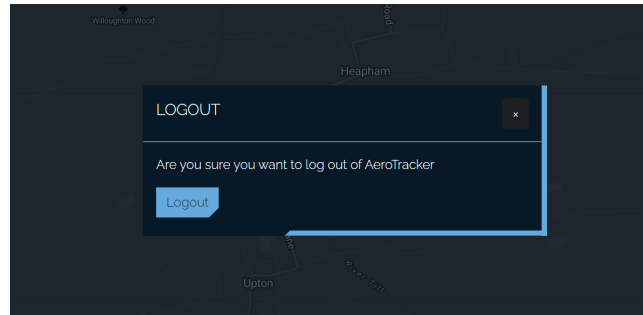
1. | Click the 'Colours' tab.
2. | Drone behaviour definitions:

DRONE BEHAVIOURS	DEFINITION
Own/Whitelisted drones	Recognised drones which have been whitelisted and flagged as safe.
Commercial & AeroPing	Commercial drones and drones with an AeroPing module.
Behaving drones	Drones which are flying safely with no concern.
Close to rules	Drones which are nearing restriction zones.
Breaking rules	Drones which are breaking restrictions.
Flagged drones	Drones which are of most concern and are breaking restrictions.

3. | Click each colour code to amend the colour(s).
4. | Click 'Use default colours' to switch back to the default.

LOGOUT

1. | Click the 'logout' tab.
2. | Click 'logout' to confirm and be logged out of the system.



Map Filters

1. | Click 'Filters'.
2. | Choose which aircraft types you would like visible.
3. | Enter a specific aircraft model for tracking purposes.
4. | Tick whether you would like the anti-drone spoofing filter on.
5. | Enable or disable any particular sensors linked to your account.
6. | Filter by a specific altitude and/or speed.
7. | Click 'Filter' to confirm filter choices.

MAP FILTERS

Aircraft Type

- Drone
- Helicopter
- Plane
- Unknown

Aircraft Model

Smart Filters

- Anti Drone Spoofing

Sources

- AeroTracker General
- B19B13
- AD4F39
- 5577A2
- 0F5958
- E1E510
- E916BE
- 434823
- 175D64
- 2A9DB5
- 5FA686

Altitude

Min Altitude (m) Max Altitude (m)

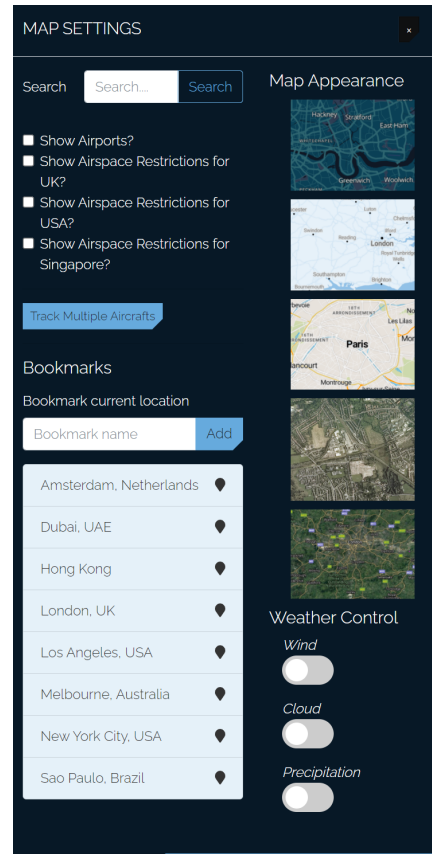
Speed

Min Speed (mph) Max Speed (mph)

Filter

Map Settings

1. | Click 'Map'.
2. | Type in the search box to find a specific location.
3. | Tick to show airports on the map.
4. | Tick to show airspace restrictions in the UK, USA and/or Singapore.
5. | To bookmark locations of interest, search for the location and click 'add'.
6. | Choose from Dark, Light, Street, Satellite or Hybrid for the map view.
7. | Add wind, cloud and/or precipitation filters in weather control, if required.



Accessing Flight History

1. | Click 'History'.
2. | Choose a sensor or zone from the data source dropdown.
3. | Select a start and end date range.
4. | Enter any additional information such as Flight ID, altitude, aircraft type etc.
5. | Click filter to search.
6. | A chart overview of the flights found will be shown.
7. | Underneath that, a breakdown of each flight will be detailed, along with its drone three-ID.
8. | You are also able to replay every flight by clicking the 'replay' button.
9. | Use the play, fast-forward and pause buttons in the bottom right corner to move through the flight replay.
10. | View the flight heatmap to identify the pilot's areas of interest.
11. | Click 'Download' to obtain a copy of the drone flight incident report.

Setting zones

1. | Click 'Zones'.
2. | You will be shown all your existing zones.
3. | Choose between adding a new 'Polygon' or 'Circle' zone.
4. | Click the 'eye' icon to view the existing zone on the map.
5. | Click the 'clipboard' icon to view the zone history statistics.
6. | Click 'edit' or 'delete' to update the zone.

ADDING A NEW POLYGON ZONE.

- a. | Click 'Add a polygon zone'.
- b. | Find the desired area on the map, where you would like the zone to be.
- c. | Click the map to drop the polygon perimeter points for your zone.
- d. | You may add as many polygon points as necessary.
- e. | Reconnect the final point to the first point, to close the polygon shape.
- f. | Click 'edit' to amend any of the polygon shape points.
- g. | Click 'save' and complete the zone profile including the zone name.

ADDING A NEW CIRCLE ZONE.

- a. | Click 'Add a circle zone'.
- b. | Find the desired area on the map, where you would like the zone to be.
- c. | Click the map in the center of your protected location.
- d. | Drag the circle in and out to adjust the size of the circle zone.
- e. | Click 'edit' to amend the circle zone size.
- f. | To make the zone dynamic and move when your sensor moves, assign the zone to a sensor.
- g. | Click 'save' and complete the zone profile including the zone name.

About AeroTracker

1. | Click 'About'.
2. | Read in depth descriptions about the system.
3. | Click 'Contact us' to get in touch.
4. | View our 'Drone Leaderboard'.
5. | Click 'Upgrade now' to learn about AeroTracker's subscription packages.



DRONEDEFENCE

DRONEDEFENCE.CO.UK

Drone Innovation Centre, Retford, DN22 7TX | +44 (0) 843 289 2805 | info@dronedefence.co.uk