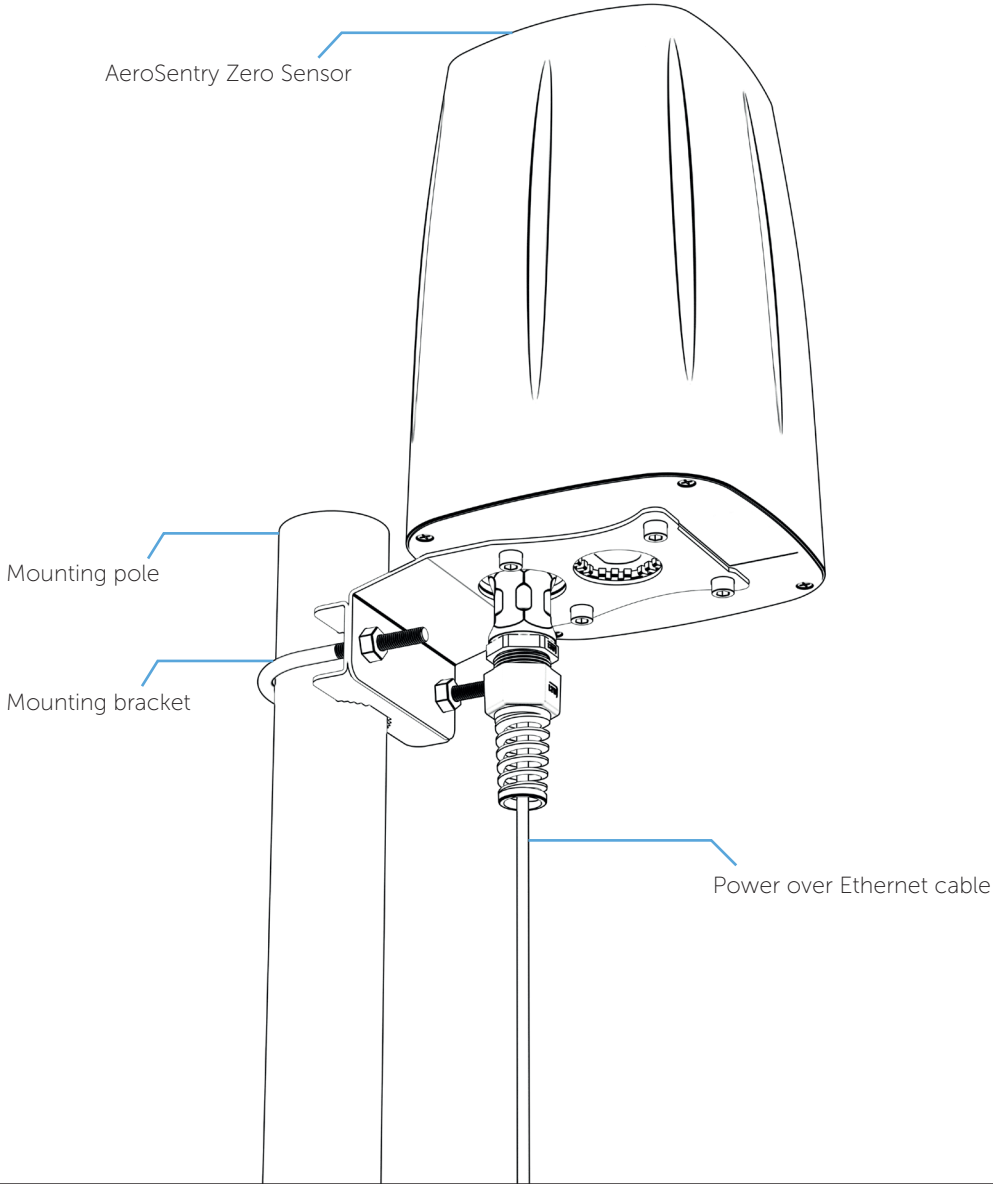


AEROSENTRY ZERO

INSTALLATION GUIDE

AERSENTRY ZERO

INSTALLATION GUIDE



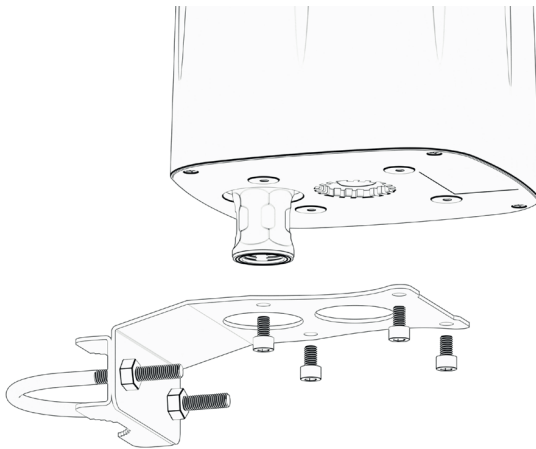
AERSENTRY ZERO

AeroSentry Zero Sensor Installation

1. | Ensure that your installation location provides an optimum line of sight, with minimal building and environmental obstructions.
2. | There are two different mounting options available with the AeroSentry Zero.
 - Mounted on a pole (see mounting option 1)
 - Mounted flat (see mounting option 2)

MOUNTING OPTION 1

1. | Affix the enclosed mounting bracket to the AeroSentry Zero sensor. See Figure 1.



[Figure 1]

2. | Once attached, slide the bracket over the pole.
3. | Point the sensor towards 'North', using the underside arrow as an alignment guide.
4. | Secure the bracket in place.

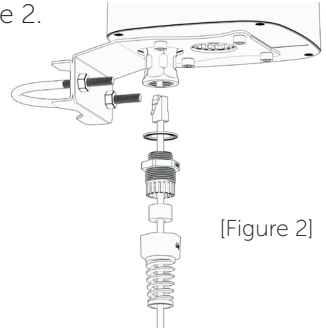
Note:

Minimum pole diameter = 45mm

Maximum pole diameter = 62mm

AERSENTRY ZERO

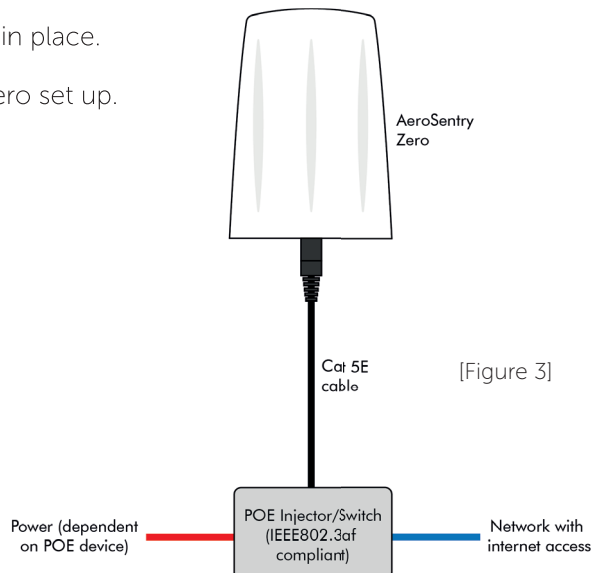
5. | Connect Power Over Ethernet cable. See Figure 2.
6. | Ensure lighting protection is in place.
7. | Continue with AeroSentry Zero set up.



[Figure 2]

MOUNTING OPTION 2

1. | Drill 4 x fixing holes in your flat surface, where the sensor will be mounted.
2. | Drill another hole for the Ethernet cable, measuring 35mm in diameter.
3. | Secure in place.
4. | Ensure lighting protection is in place.
5. | Continue with AeroSentry Zero set up.



[Figure 3]

AERSENTRY ZERO

Lightning Protection

The AeroSentry Zero system includes surge protection modules in the antenna module, power module, and Ethernet port. AeroSentry Zero does not include a lightning induction system, and should be installed within the protected region of another lightning induction system.

AeroSentry Zero Set Up

1. | Connect the AeroSentry sensor to power over ethernet (POE).
2. | Find the sensor's IP address, as assigned by your DHCP server.
3. | To access the sensor configuration webpage, type into your browser: IP Address, colon sign ':' and the port number '8000'.
eg. `http://192.168.1.141:8000`
4. | Decide whether to change the static IP of the sensor.

If **yes**, provide a new static IP address and a new network gateway IP. Ensure there are no conflicts on the chosen IP.

If **no**, continue to step 5.
5. | Assign a name to the location of the sensor.
6. | To set the GPS location, tick the box and enter the latitude, longitude and altitude.

Note: Only required if the GPS signal in the area is weak.
7. | Enter the bearing from North.

Note: The sensor should point North using the underside sticker as a directional guide.
8. | Click 'Submit' and wait for the sensor to reboot.
9. | The sensor can now be found on the static IP set by the user.



DRONEDEFENCE

DRONEDEFENCE.CO.UK

Drone Innovation Centre, Retford, DN22 7TX | +44 (0) 843 289 2805 | info@dronedefence.co.uk

www.dronedefence.co.uk